

FRIDAY NIGHT COMICS
presents Georgia Webber



a RANT about
RECTANGLES

Friday, May 31st 7pm on ZOOM

Thanks for coming to a
SAW Friday Night
Workshop!

A RANT ABOUT RECTANGLES

This workshop was led by
GEORGIA WEBBER

<https://www.drawingtheinsideout.ca/>
<https://www.instagram.com/drawingtheinsideout/>

On May 31, 2024

Contributors to this
collection in order of
appearance are:

Tara Black
Jamie Scandal
Valentina Rodriguez (3
pages)
Christian Toro
Vicki Tran
Edgar Russell III
Umi Hagitani (3 pages)
Nikki Tate (5 pages)

Next workshop → <https://sawcomics.as.me/friday-night-comics>

You can also join hundreds of people sharing
their work at our free members site:

🗨️ https://members.sawcomics.org/share/F6BBQeyGUGE0g-Qk?utm_source=manual

We hope you'll share your work on social
media with the hashtag #fridaynightcomics .
Please tag us
@comicsworkshop

Thanks so much for being here!

You can support us on:

🗨️ PayPal: <https://www.paypal.me/comicsworkshop>



GEORGIA WEBBER
Friday Night Comics
@comicsworkshop

a RANT about rectangles



I spend a lot of time looking to the inside of our bodies for creativity

You're constantly in conversation with the rectangle

This is not an anti-rectangle talk

TV Movies They're happening in a rectangle

It's a neat and tidy shape

The piece of paper is a rectangle

It's the portal

pay attention to it

and hand can't draw a straight line without help

Why is it so hard to create an organic form in a rectangle?



every time you scroll you're viewing a rectangle

IT'S REALLY NOT INFINITE

but when we find structures to look through, it's always a rectangle

THIS DOES NOT SEE IN A RECTANGLE

the panel is an object

In the window metaphor you look through

You're not meant to see it

(for comics)

IN COMICS THE FORM IS A PART OF THE MESSAGE



Do you like it portrait or landscape?



You want things that agree with the shape of the panel

You don't want to push it that far that the reader asks "did they draw it wrong?"

You can't ditch the structure of the rectangle

If this is two panels, what would you expect to see?

Your answer is part of your visual language

What if you drew trees up close in horizontal?

A STORY IS AN EXPERIENCE it's not an object

It feels unnatural because it's not a rectangle - Tom

putting counter intuitive images in panel spaces

Discover how you feel about different shapes? That's important in formation

Something tall and skinny in a short wide panel - you don't have any reference point

We can't get abandon the rectangle



EXERCISE

Draw a weird shape and see how that affects what you want to draw in it, or draw a blob & see what you can find in the shape

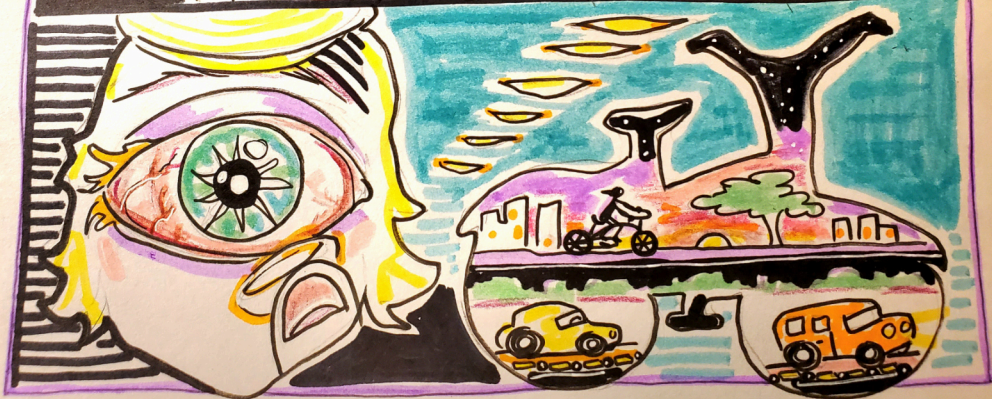
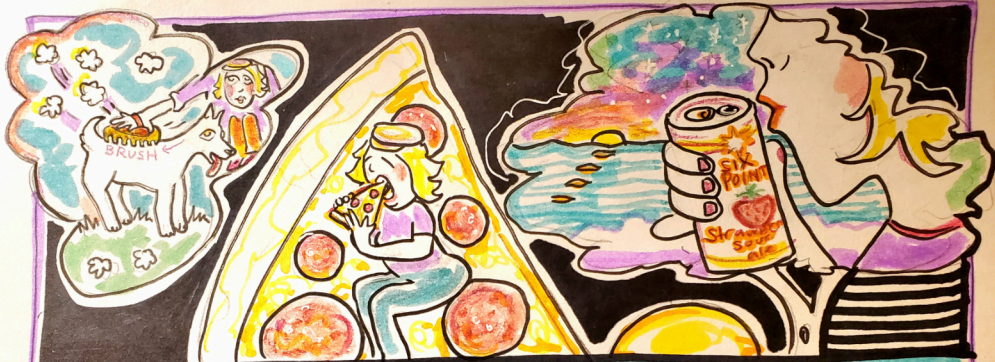
twisted AN EYE



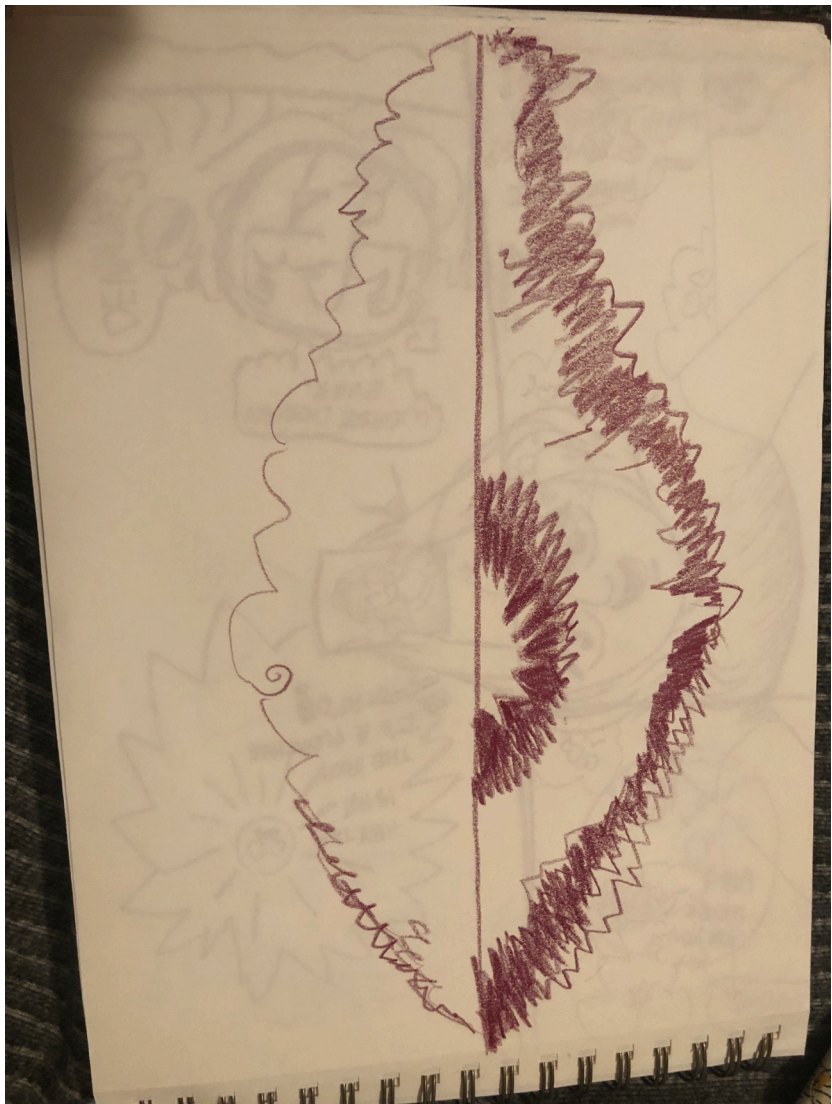
eyes in A TWIG makes it abstract

EXERCISE

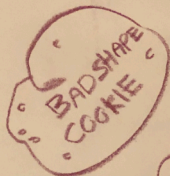
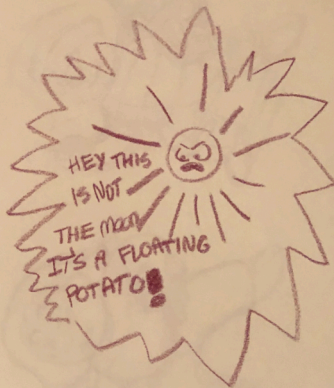
Draw against the inclination of the shape of the panel



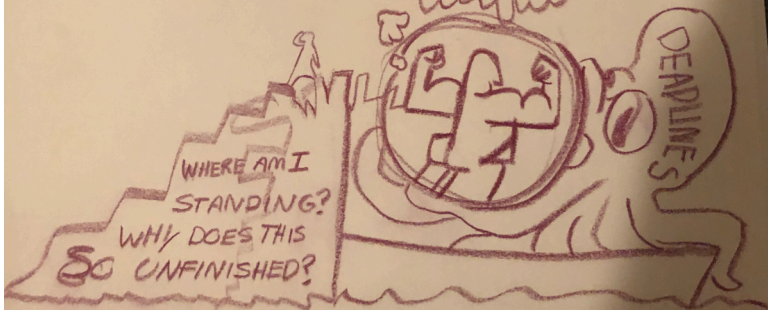


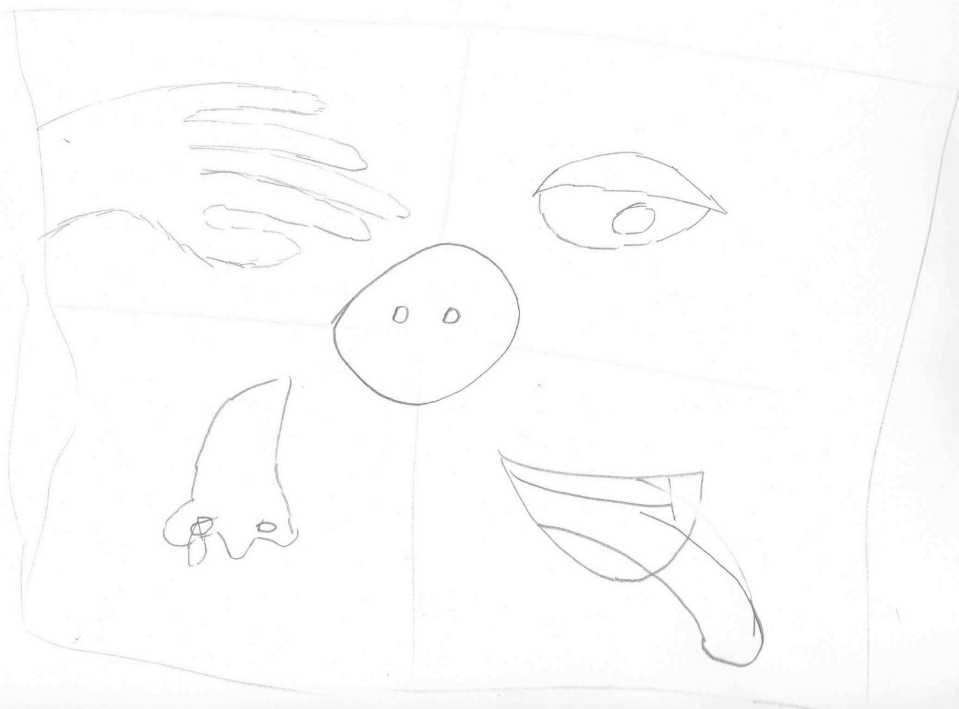


PASS.

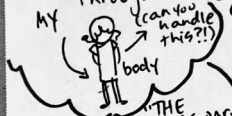


WORSE DESIGN EVER.





I AM drawing with and through MY



"THE HOW IS PART OF THE PROCESS"

"a shade you want to invoke"

A Panel as a cookie, ie dual communication

"I have no Problem with the rectangle"

P.S. she is AWC. SOME

GEORGIA WEBBER
31 MAY 2024

The rectangle is not a Problem... It is a frame of reference. A departure point. A system of

what is a rectangle?

Drawing is a somatic experience. (yeah, I can get behind that)

I AM A PORTAL!

FORMALISM

I AM A choice

understanding. Even if we don't use the rectangle, it guides, informs, "influences" the way we approach.



VICKI TRAN

(that's me thinking, not questioning, well, that to.)

AM inside one now?

Make Meaning - try to understand, relate to what we see, candiditate our choice.

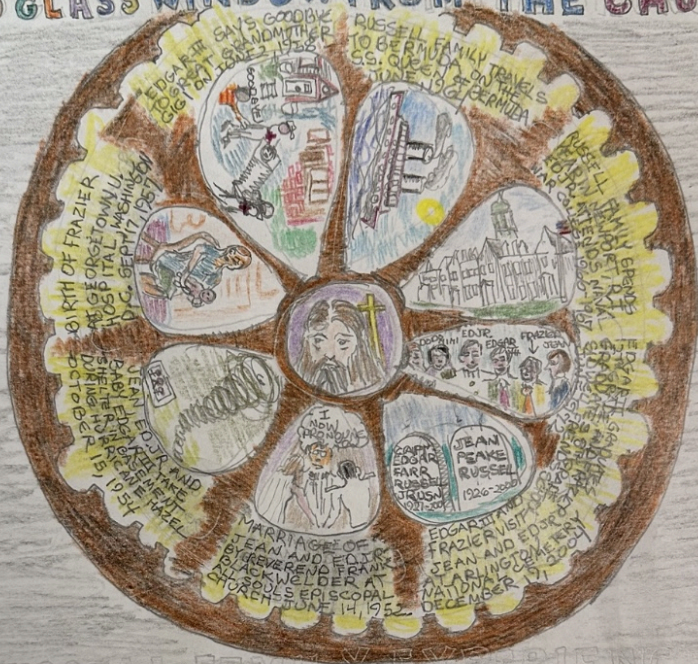
AM in a

or looking through one now?

reflects our visual vocabulary. So does that mean we're living inside one?

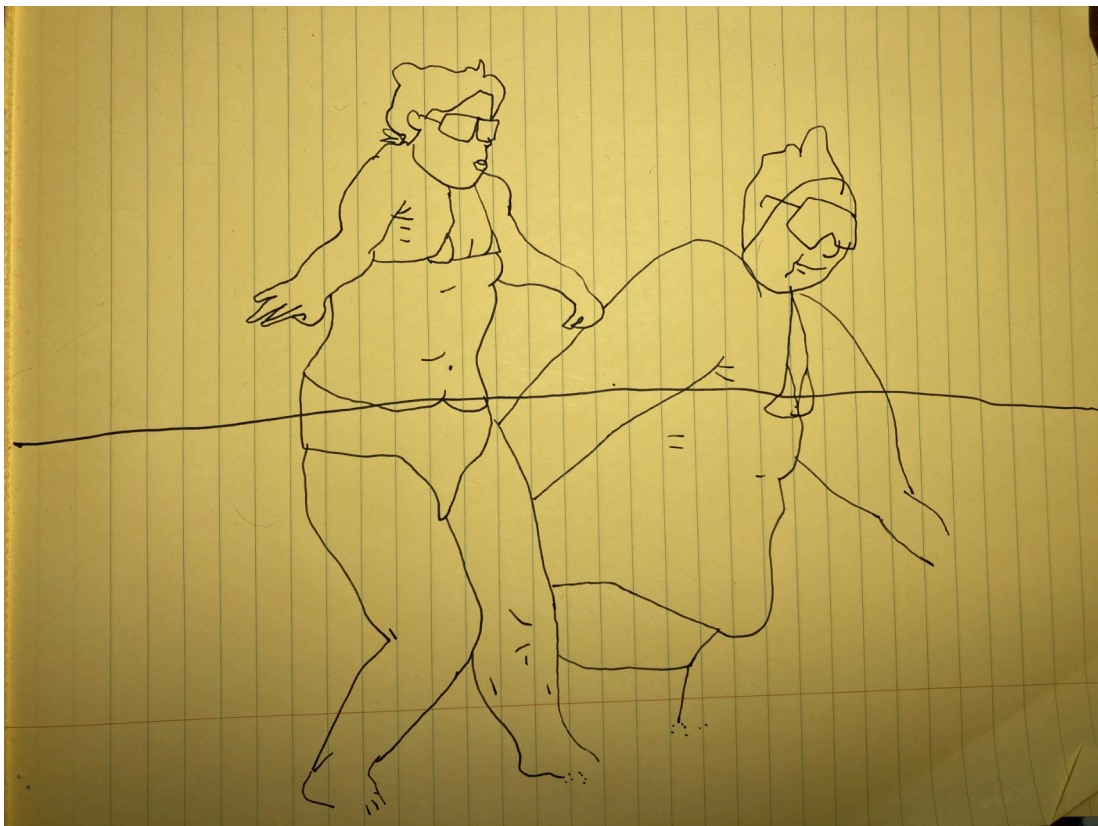
I'M IN A RELATIONSHIP WITH... A RECTANGLE

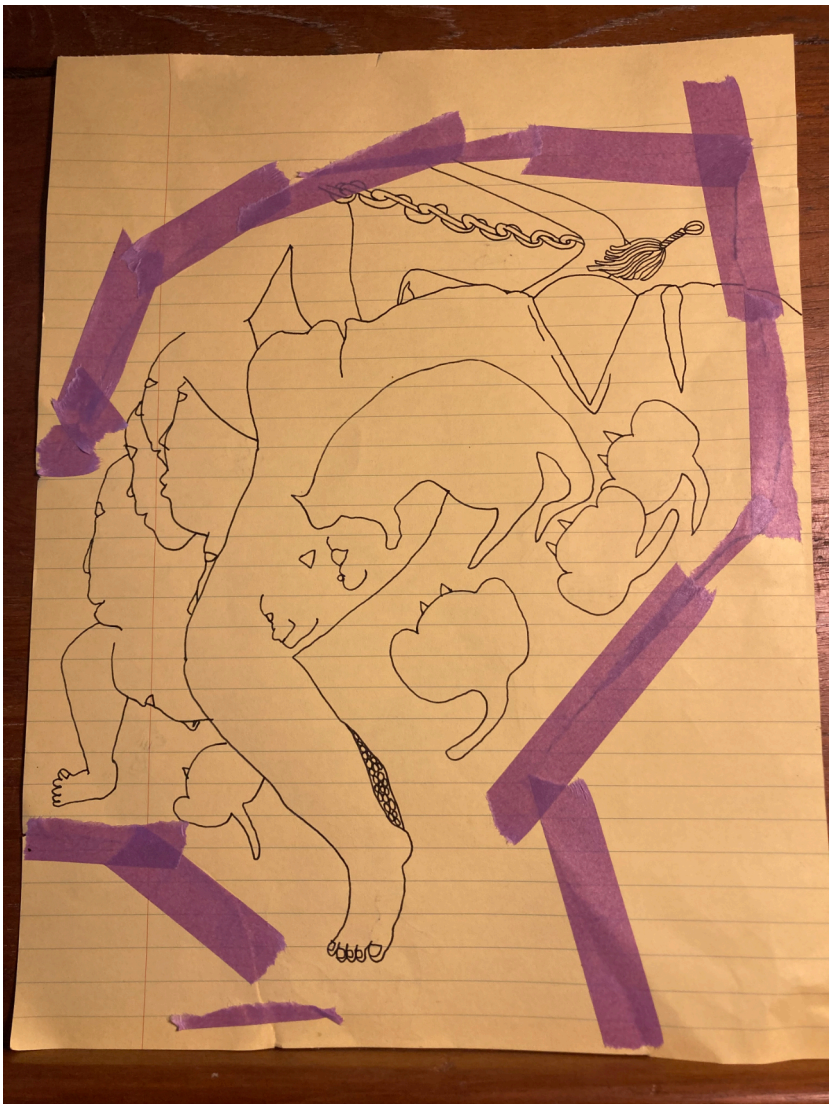
"STAINED GLASS WINDOW FROM THE CHURCH OF

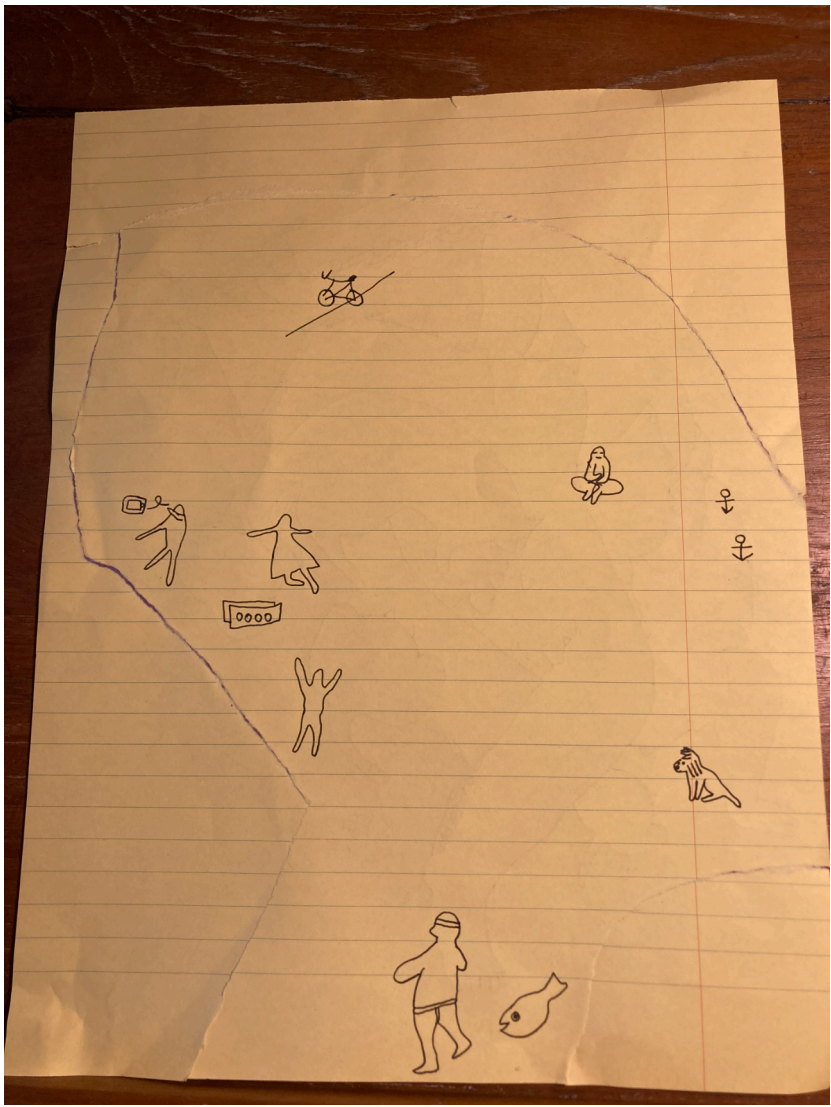


THE RUSSELL FAMILY EXPERIENCE

WRITTEN AND DRAWN BY EDGAR FARR RUSSELL III & MAY 31, 2024 7:00 PM - 8:20 PM © 2024
 SAW FRIDAY NIGHT COMICS "A RANT ABOUT RECTANGLES" WITH GUEST ARTIST, GEORGIA WEBBER AND HOST, TOM HART









WITCHAMANT SCRIPTS
FREE!
WORDS
THE BENDER IS THE FANVEL
PERFECT!
TAKE IN THE
THE BENDER IS THE FANVEL
PERFECT!
TAKE IN THE

ch (Marmee)
as a dove...but with

update: WX30
zone: 9225: Short
FRIDAY
31 MAY 24
11:05 AM

RECYCLED

MISC. NOTE
LIBRO'S

TYRANNY

YOU NEVER MISS THE WATER
TILL THE WELL RUNS DRY.





AUTOMATIC
SCRIPTS

BE FREE!
ESCAPE

2 WORDS

ESCAPE THE RECTANGLE
TAKE TO THE SKY

PAPER IS A
BEAUTIFUL
THING

FRANNY

NO PROBLEM

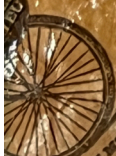
PERFECT
LINES

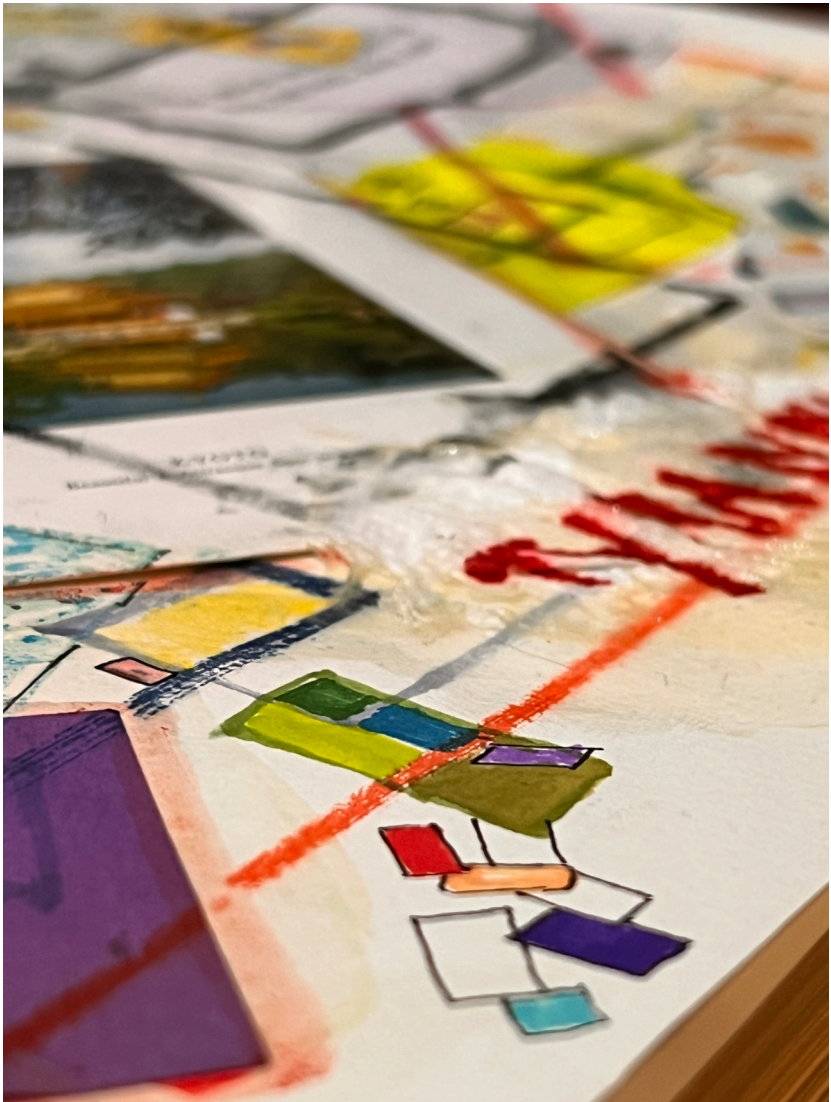
WHERE
IS THE
DIVIDER
BOX?

THE PAPER IS THE PANEL

SUPER GO AHEAD BUT THAT'S HARD TO SUPPORT

UPRIVED FALLS 6-8PPA









**Sequential Artists
Workshop**

**Free Friday
Night Comics
Workshops**

**learn.sawcomics.org
@comicsworkshop**